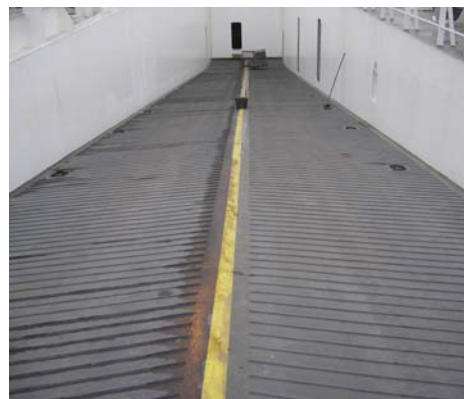


# Project Experience

## Spliethoff RoRo Kraftca



### project information

<b>location</b>	Sczcecin, Polen
<b>owner</b>	Spliethoff
<b>project</b>	New construction Large RoRo
<b>painting contractor</b>	Sczcecin Shipyard
<b>date of project</b>	06/2006

### systems and substrates

#### Decks

<b>pretreatment</b>	ISO 8501 Sa 2
<b>2 coat sytem</b>	MCU-Miozinc 75µm DFT MCU-Miozinc 75µm DFT

#### Ramps

<b>pretreatment</b>	ISO 8501 Sa 2
<b>3 coat sytem</b>	MCU-Miozinc 75µm DFT MCU-Aluprime 50µm DFT + non skid MCU-Aluprime 50µm DFT

This was the 1st of a series of 10. It was originally specified Hempel inorganic zinc and Spliethoff; then new to Ro Ro's, required the best coating system with the least amount of maintenance and a proven track record. This was a bonus for the Polish yard where the coatings have to be applied in often cold and damp conditions. In fact during the 1st weather deck application, it started raining during the last few minutes of the application. The Spliethoff inspector would have rejected and call for a recoat of the application – were it not for using MCU-Coatings, much to the relief of the yard. On January 3rd 2008, the superintendent confirmed he was extremely pleased with the results considering that this vessel had gone through severe abuse with carrying of heavy cargo including military tanks with no coating cracking or any significant wear. The decks were free of any corrosion or worn areas. The aft ramp non skid was totally intact.